

# LIFEBREATH® RNC4-TPD

Indoor Air Systems **HEAT RECOVERY VENTILATOR**



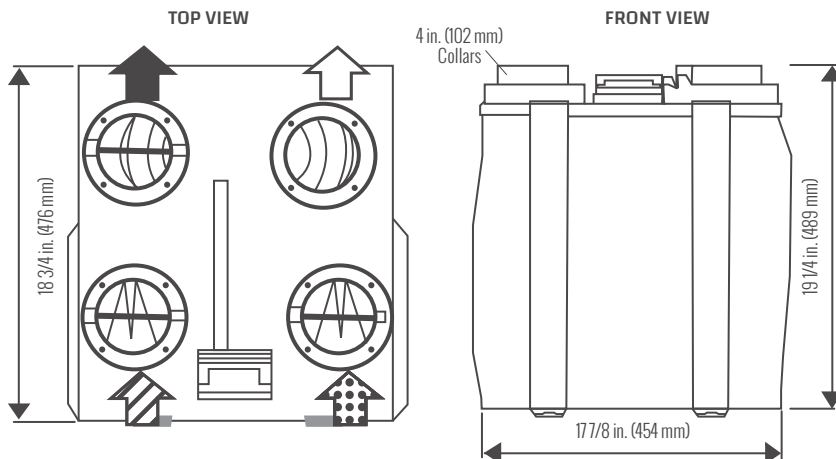
RNC4-TPD  
66 CFM @ 0.3 (75) IN. W.G. (PA)

## OUR SMALLEST UNIT TO DATE. IDEAL FOR SMALL HOMES AND TOWNHOMES WITH TIGHT SPACE REQUIREMENTS

- High Efficiency Hex Core
- Adjustable Dampers
- Top Ported
- Super Compact Design

**NOTE:** Front clearance of 25 in. (635 mm) is recommended for servicing unit.  
All ducts use 4 in. (102 mm) round collars.  
Balancing dampers are located in both air streams.  
All units conform to CSA and UL standards.

## DIMENSIONS



### Airflow:

- Stale Air to Outside
- Fresh Air from Outside
- Stale Air from Inside
- Fresh Air to Inside

## FEATURES

### THERMALLY CONDUCTIVE CORE

Counter-flow heat recovery core transfers heat between two airstreams. It is easily removed for cleaning or service.

### MOTORS AND BLOWERS

Each airstream has an independent motorized impeller with multiple fan speed operations.

### MERV 6 FILTERS

Washable air filters in exhaust and supply airstreams.  
**MERV 13 Upgrade: 65-195-6R.**

### MOUNTING

Four threaded inserts at corners of the cabinet designed to accept the "S" hooks and hanging straps supplied with the unit.

### DEFROST

Intelligent recirculating damper defrost system.

### CASE

22 gauge prepainted galvanized steel for superior corrosion resistance. Insulated to prevent exterior condensation. Drain connections 2 - 1/2 in. (12 mm) OD. Balancing ports are located on unit.

### INSTALLER SELECTABLE HIGH SPEED SETTINGS

Adjustable DIP switches are located on the circuit board, Hi3 is the factory setting. Refer to the installation manual for adjustment instructions.

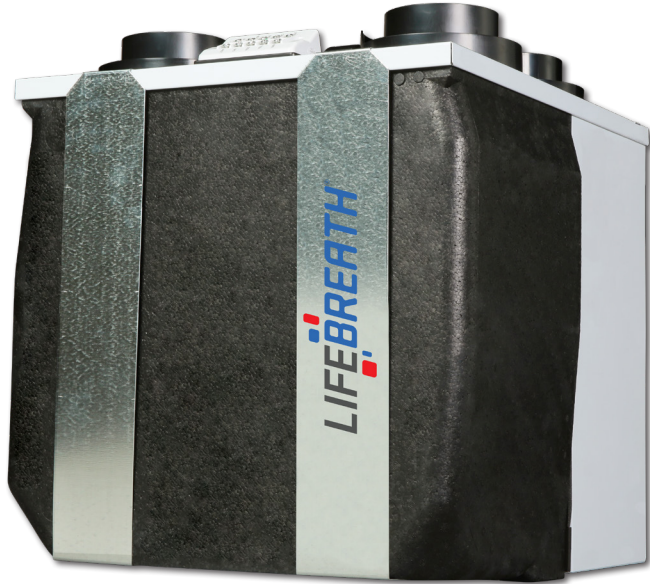
### ELECTRONICS

The optional control can be wall mounted in a central location of the home. 3 wire 20 gauge (min.) 100 ft length (max.).

**Weight: 35 lbs (16 KG) • Shipping Weight: 38 lbs (17 KG)**

# LIFEBREATH® RNC4-TPD

Indoor Air Systems HEAT RECOVERY VENTILATOR



## SPECIFICATIONS

<b>MODEL:</b>	<b>RNC4-TPD</b>
<b>VOLTAGE:</b>	120 V
<b>FREQUENCY:</b>	60 Hz
<b>WATTS @ 48 CFM (22 L/S):</b>	37 W
<b>CURRENT:</b>	0.5 A
<b>AIRFLOW @ 0.3:</b>	66 CFM
<b>WEIGHT:</b>	35 lbs / 16 kg
<b>DRAIN:</b>	Yes
<b>MCA:</b>	1.0 A
<b>MOP:</b>	15 A
<b>WARRANTY:</b>	Units carry a lifetime warranty on the HRV core and a 5 year replacement parts warranty.



## PERFORMANCE

IN. W.G. (PA)	0.2 (50) CFM (L/s)	0.3 (75) CFM (L/s)	0.4 (100) CFM (L/s)	0.5 (125) CFM (L/s)	0.6 (150) CFM (L/s)
<b>Net Supply Airflow</b>	70 (33)	66 (31)	59 (28)	55 (26)	49 (23)
<b>Gross Supply Airflow</b>	74 (35)	68 (32)	64 (30)	57 (27)	51 (24)
<b>Gross Exhaust Airflow</b>	78 (37)	74 (35)	68 (32)	61 (29)	53 (25)

**Sensible Efficiency (ASE)  
@ 48 CFM (23 L/s)**      32°F (0°C)      76%

**Sensible Efficiency (SRE)  
@ 47 CFM (22 L/s)**      32°F (0°C)      63%

**Sensible Efficiency (SRE)  
@ 51 CFM (24 L/s)**      -13°F (-25°C)      65%

